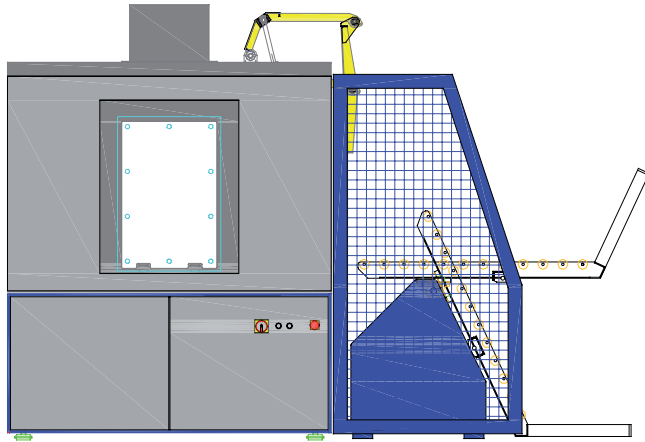


ITT-1

The economical solution
for small to medium sized production quantities



ITT-1 1280 and ITT-1 1680

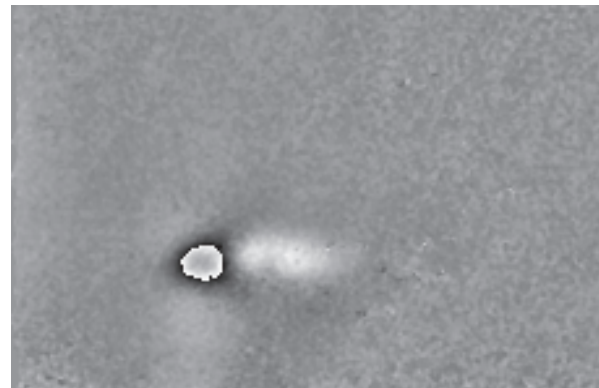
The ideal solution for the cost-effective inspection for all kind of tires up to a maximum outer diameter of 1280 mm or 1680 mm. The ITT-1 meets the demands of new tire manufacturers, retreading and for Research & Development.

The basic ITT-1 is available as stand-alone unit featuring a single measuring head, suitable for small and mid-size throughput and for bead-to-bead operation. For this type only a minimum of floor space is required.

The basic setup can be extended with a double door configuration, a turn over fixture (TOF) for automatic bead-to-bead operation, conveyor modules and two or three measuring heads for a higher productivity. All these extensions can be implemented subsequently on site.

Your benefits

- basic configuration as a single door setup for low volume operation
- but full test capabilities
- compact setup requiring a minimum of floor space, silent and minimized energy consumption
- modular design for individual applications and future expansion
- easy operation by user friendly software
- HMI with touchscreen operation
- automatic tire contour detection for automated tire test
- or predefined setting selection
- different test procedures for individual and specific tire testing
- all options for conveyor and automatization available
- special features such as 45° shearing, adjustable image format,...



NON-DESTRUCTIVE TIRE TESTING BY SDS TECHNOLOGY

Technical data and options

Features	ITT-1 1280	ITT-1 1680
Tire Types	motor cycle-, passenger car-, truck-, aircraft tires; radial and bias construction	
Testing Area	crown, shoulder and upper sidewall from inside without flipping	
	full bead to bead and turn-up area with tire flipping (manually or automated)	
Defect Types	all kind of separations, trapped air, corrosion, loose wires, undercure, blister,...	
Display of Results	overview of all scans, single scans, single sector display as result- and video image	
Data Storage	automatic, ISO compliant, backup manager for archiving to various media	
Loading / Unloading	single side loading/unloading or optional second door with separate loading and unloading	
Automatic Turn Over Fixture (TOF)	optional with additional loading conveyor modules for reversed loading function* or offline with round about	
Conveyor System	optional various modules, individual layouts and several interfaces for logistic solutions	
Barcode	optional handheld barcode scanner or automated solutions, open data interfaces (FAR, etc.)	
Automatic Anomaly Detection	optional with adjustable sensitivity, evaluations zones, polygonized area, statistical output (CSV)	
Computer System / PLC	Industrial PC, Windows 7 / WAGO or optional Beckhoff, Rockwell **	
Remote Control	yes via internet	
Number of Measuring Heads	1,2 or 3	1,2 or 3
Dimensions L x W x H (mm) single door	3500 x 1500 x 2250 (2000 *)	4100 x 1900 x 2500 (2200 *)
Dimensions L x W x H (mm) double door	4900 x 1500 x 2250 (2000 *)	5700 x 1900 x 2500 (2200 *)
Weight	ca. 1.850 kg	ca. 3.000 kg
Electrical Connection	3 Phase with 50 or 60Hz, typ. 380 - 480 V / 20 A or country specific	
Pneumatic Connection	R1/2", min. 7 bar	
Ambient Temperature ***	+10°C to + 35°C	
Color (RAL)	blue (5002), silver (9007) or customer specific	
min. innerØ / max. outerØ / max. weight	Ø10" / Ø1280 mm / 125 kg	Ø12" / Ø1680 mm / 150 kg
min./max width ("/mm)	100 mm / 560 mm	100 mm / 660 mm
Test capacity tires/h. crown 1,2,3 head ****	40, 55, 55	35, 50, 50
Test capacity tires/h. bead to bead 1,2,3 head ****	14, 20, 26	13, 18, 24

* reduced shipping height; ** details on request; *** higher temperature ranges with air condition;

**** with 8 sectors / 40 mbar, single door, typical resting times and Windows 7; tires are loaded continuously
 cycle time for single head with single door configuration, manual turnover not included - automatic turnover within cycle
 cycle time for double and triple head with double door configuration, manual turnover not included - automatic turnover within cycle

SDS Systemtechnik GmbH
 Rudolf-Diesel-Strasse 7
 D-75365 Calw-Stammheim

www.sds-systemtechnik.com
 info@sds-systemtechnik.de

SDS
 Systemtechnik
 GmbH



Technical consulting
 Phone +49 (0) 7051 / 93154-0

Personal advice on-site.
 Arrange an appointment:
 Phone +49 (0) 7051 / 93154-0
 Fax +49 (0) 7051 / 93154-99