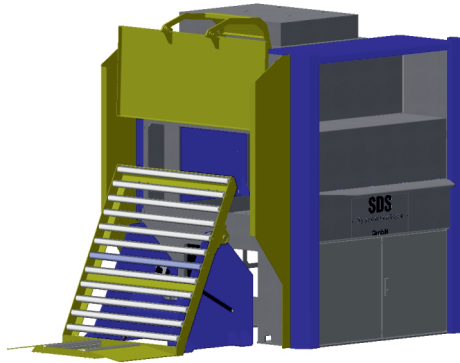


ITT Easy

The easy solution for retreading



ITT Easy

ITT *Easy* is the basic solution for the initial inspection in truck and tire retreading, compact and easy to use, with a single loader / unloader and a single measuring head. Optionally, the machine can be equipped with a second door, with separate unloader and a second measuring head to improve the test capacity and casing handling.

Testing from shoulder to shoulder plus part of the sidewall, the machine shows the critical areas of casing to classify the retread capability of a casing.

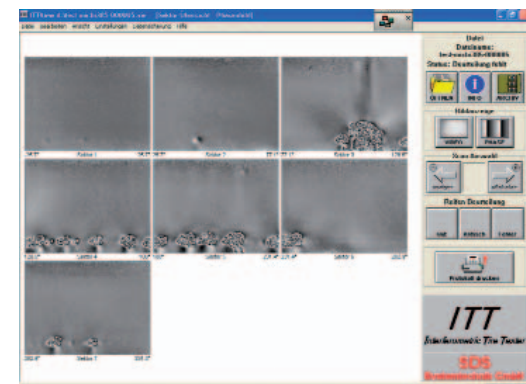
The ITT *Easy* system is basically maintenance free to minimize down time and operation cost.

Easy Operation Intuitive machine handling with defined testing programs ensure an easy and also reliable daily operation of all tire sizes.

With the user friendly software, the perfect image quality and real time operation relevant anomalies are clearly displayed and verified, also by semi-skilled operators. Test results are archived automatically and a printout or Pdf file is available for documentation.

Return of Invest The ITT *Easy* system guarantees a fast return of the initial investment due to the minimized acquisition cost for the machine and low operating costs. The layout is very compact and fits into each initial inspection area. Inspecting shoulder to shoulder is the best compromise for an easy casing classification and reliable retreads.

Excellent Service By the SDS global service network and customer specific service contracts, SDS guarantees a close and fast follow-up of all customers.



NON-DESTRUCTIVE TIRE TESTING BY SDS TECHNOLOGY

Technical data and options

Features	ITT <i>Easy</i>
Tire Types	light truck- and truck tires; radial and bias construction
Testing Area	crown, shoulder into sidewall from inside of tire
Defect Types	all kind of separations - belt edge separation, corrosion, loose wires, undercure, blister,...
Display of Results	overview of all scans, single scans, single sector display as result- and video image
Data Storage	automatic, ISO compliant, backup manager for archiving to various media
Loading / Unloading	single side loading/unloading or optional second door with separate loading and unloading
Barcode	optional handheld barcode scanner or automated solutions, open data interfaces (FAR, etc.)
Automatic Anomaly Detection	optional with adjustable sensitivity, evaluations zones, polygonized area, statistical output (CSV)
Computer System / PLC	Industrial PC, Windows 7 / WAGO or optional Beckhoff, Rockwell *
Remote Control	(yes) via internet
Number of Measuring Heads	standard single head (second head optional)
Dimensions L x W x H (mm) single door	3000 x 1850 x 2100
Dimensions L x W x H (mm) double door	4500 x 1850 x 2100
Weight	ca. 1250 kg
Electrical Connection	3 Phase with 50 or 60Hz, typ. 380 - 480 V / 16 A or country specific
Pneumatic Connection	R1/2", min. 6 bar
Ambient Temperature **	+10°C to + 35°C
Color (RAL)	blue (5002), silver (9007) or customer specific
min. innerØ / max. outerØ / max. weight	Ø15" / Ø1280 mm / 125 kg
min./max width ("/mm)	120 mm / 500 mm
Test capacity tires/h. crown 1 (2) head ***	25 , 45

* details on request; ** higher temperature ranges with air condition;

*** with 8 sectors / 40 mbar, single door, typical resting times and Windows 7; double door configuration ~10 sec faster

SDS Systemtechnik GmbH
Rudolf-Diesel-Strasse 7
D-75365 Calw-Stammheim

www.sds-systemtechnik.com
info@sds-systemtechnik.de

SDS
Systemtechnik
GmbH



Technical consulting
Phone +49 (0) 7051 / 93154-0

Personal advice on-site.
Arrange an appointment:
Phone +49 (0) 7051 / 93154-0
Fax +49 (0) 7051 / 93154-99